

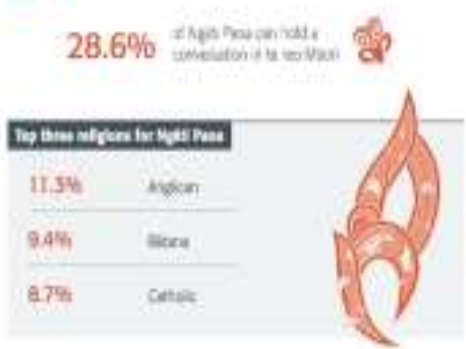
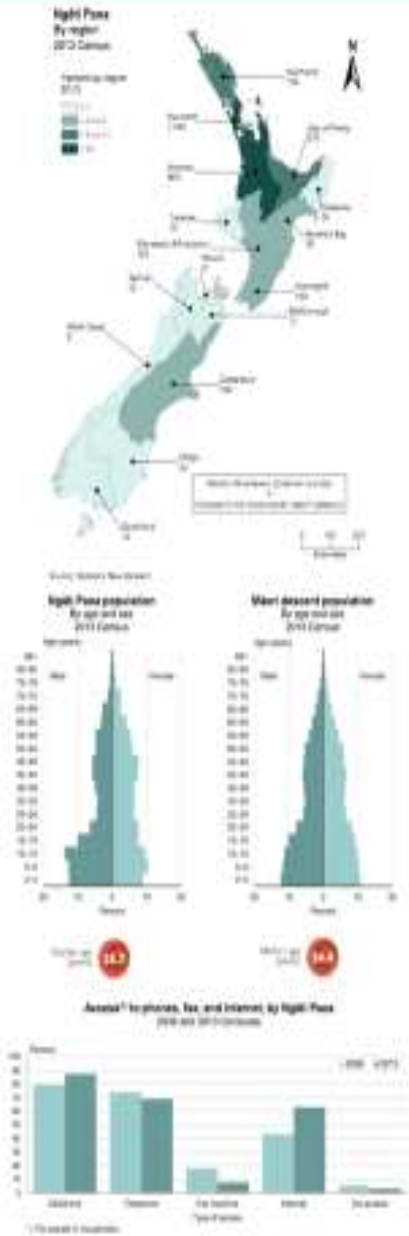
# Ngāti Paoa



## Iwi Workshop on Strategic Planning (Ngāti Paoa Iwi Trust)

**Ngāti Paoa**  
Iwi profile

### Our Profile today.



- ❖ Population – 3,500 (approx)
- ❖ 66% formal qualifications
- ❖ 28% speak Māori
- ❖ 68% Employed
- ❖ \$22.5k Media pay
- ❖ 28% home owners
- ❖ Live mainly in South Auckland
- ❖ 278 unemployed
- ❖ 3 current marae

